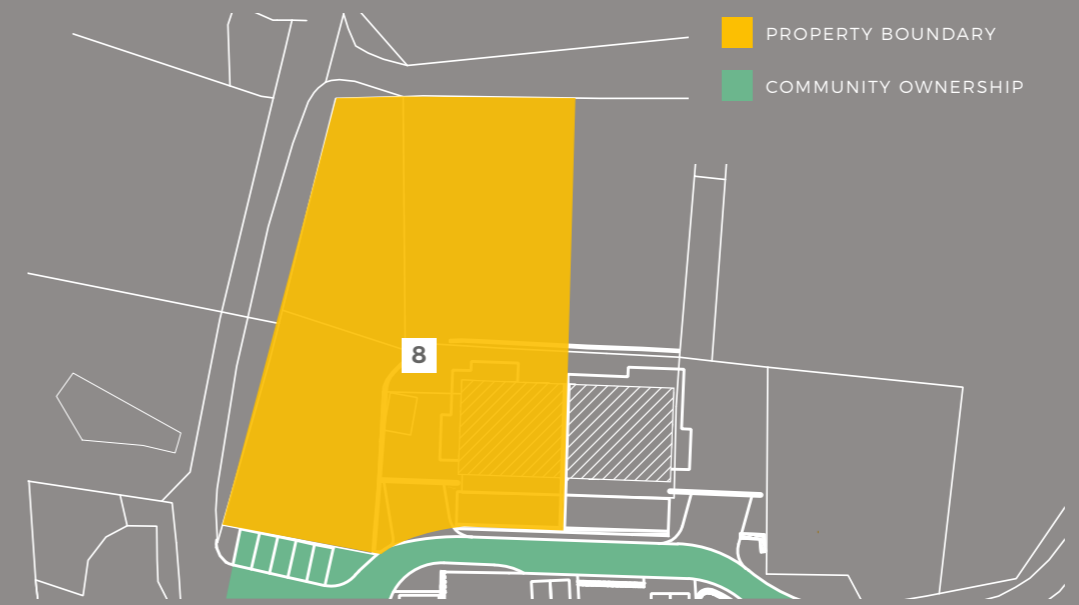


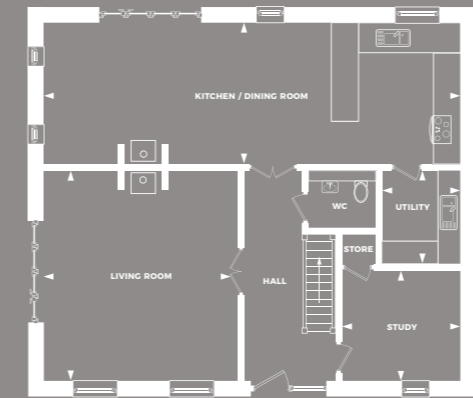


LOCATION PLAN

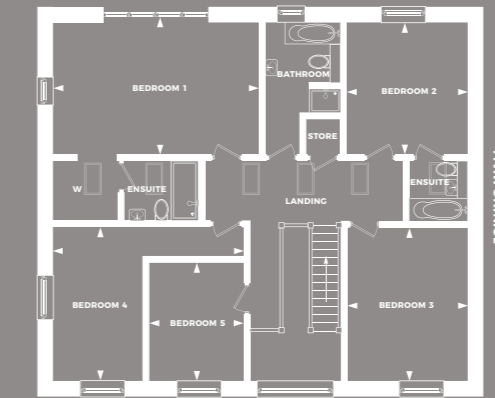
Gross internal floor area: 2695.5 ft²



FLOORPLANS



GROUND FLOOR



FIRST FLOOR

BOWFELL BARN

Bowfell Barn is a well-presented new 'barn style', five-bedroom property with a natural stone façade nestled in the heart of the Cumbrian countryside. It is a comfortable and spacious home with ample room for accommodating friends and family.

The ground floor boasts a good-sized, open-plan entertaining area; including a Siematic kitchen with all mod-cons, built in Neff appliances and quartz worktops. It flows seamlessly through the lounge, leading to the patio and out to a spacious enclosed garden; north facing to make the most of the evening sun.

There is a separate, generous living room with plenty of natural light, as well as utility room, study, and downstairs W.C., with underfloor heating throughout.

Upstairs is host to five, well-lit bedrooms of varying sizes, well-suited to a family. All have built in wardrobes and two are complete with luxury en-suite bathroom facilities. The beautifully designed family bathroom boasts a separate bath and walk-in shower.

Additional benefits to this semi-detached property include ample storage across both floors, private parking and a large landscaped garden.

PRICE ON APPLICATION
BUILD COMPLETION - PHASE 3