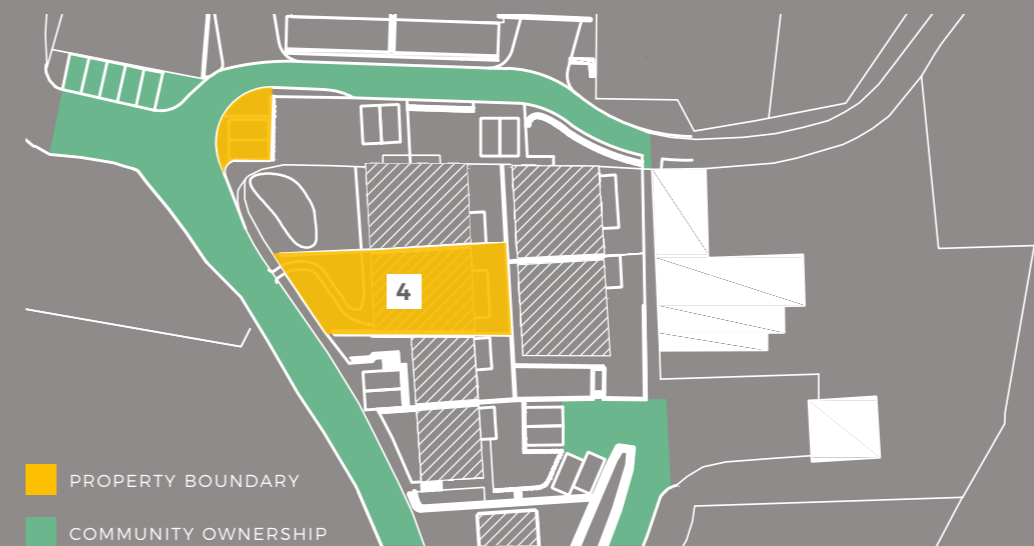


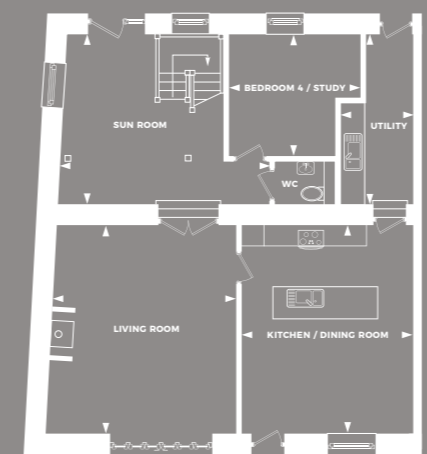


LOCATION PLAN

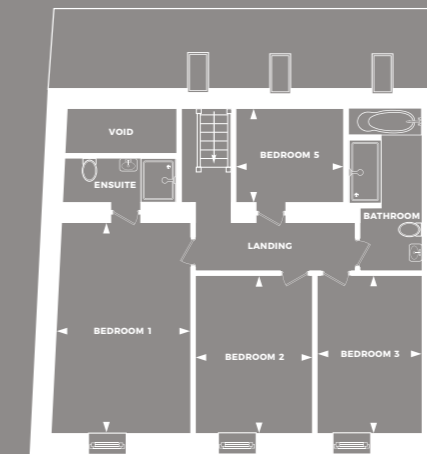
Gross internal floor area: 2109 ft²



FLOORPLANS



GROUND FLOOR



FIRST FLOOR

BYRE HOUSE

A luxury barn conversion, Byre House is a beautiful five-bedroom family home that has been built to make the most of country living.

Its spacious entrance foyer leads via double doors into a well-presented, comfortable lounge area with a fireplace. A downstairs utility area makes daily life and dealing with the weekend's muddy boots all that more easy - with room for both a washing machine and drier.

This beautifully presented home boasts five bedrooms, including a master bedroom with a conveniently situated, luxury en-suite, finished to a high quality.

Byre House benefits from a sociable open-plan kitchen diner with all mod-cons and high-quality quartz worktops.

With a family bathroom that boasts a bath and separate shower area, plus a downstairs W.C., Byre House is a comfortable family home that has been built with practicality in mind and is perfect for hosting family and friends.

The property features dedicated parking spaces and exclusive private access. The gardens are west facing, fully enclosed and landscaped, featuring lawn areas with a striking water feature and flag stone paving for ease of maintenance.

£565,000

BUILD COMPLETION - PHASE 1