

OLD SHIPPON

Historically a cattle shed, Old Shippon is a spacious five-bedroom family home that has been built to make the most of country living.

Its welcoming, roomy entrance foyer leads via double doors into a well-presented lounge with a fireplace. A downstairs utility area makes daily life and dealing with the weekend's muddy boots all that more easy - with room for both a washing machine and drier.

This beautifully presented home boasts five bedrooms, including a master bedroom with a conveniently situated, luxury en-suite, finished to a high quality.

Old Shippon benefits from a sociable open-plan kitchen diner with all mod-cons and high-quality quartz worktops.

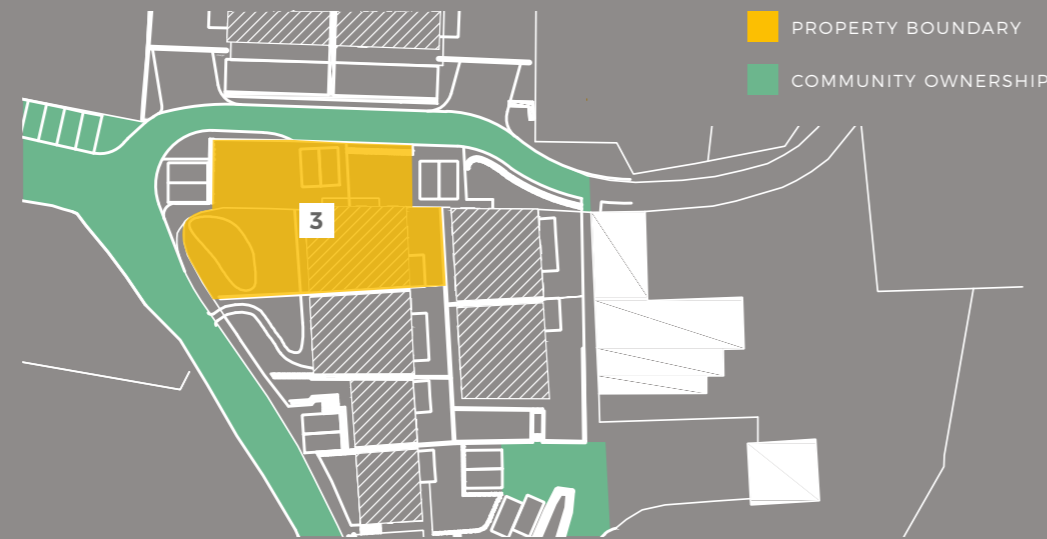
With a family bathroom that boasts a bath and separate shower area, plus a downstairs W.C., Old Shippon is a comfortable family home that has been built with practicality in mind and is perfect for hosting family and friends.

The front of the property is approached via a peaceful and exclusive private access. The gardens are west facing, fully enclosed and landscaped, featuring lawn areas with an attractive natural pond, and traditional flag stone paving for ease of maintenance.

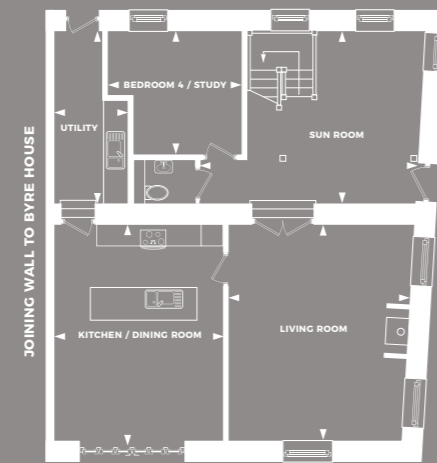
£575,000
BUILD COMPLETION - PHASE 1

LOCATION PLAN

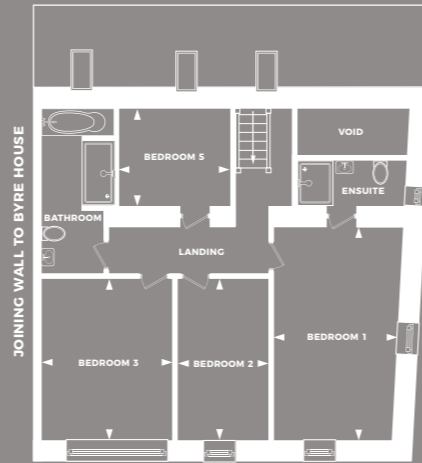
Gross internal floor area: 2082 ft²



FLOORPLANS



GROUND FLOOR



FIRST FLOOR

