



## LOCATION PLAN

Gross internal floor area: 1178 ft<sup>2</sup>



## ROE DEER VIEW

A comfortable and cosy new 'barn style' home with a natural stone facade in the heart of the Cumbria, Roe Deer View is the perfect home for those looking to enjoy all that countryside has to offer.

With three, good-sized bedrooms, including a gorgeous, high-quality master en-suite, and family bathroom, with a bath and separate shower area offering high-spec fittings, this home is great for hosting family and friends. Plus, a downstairs W.C. adds some additional convenience to this relaxing home.

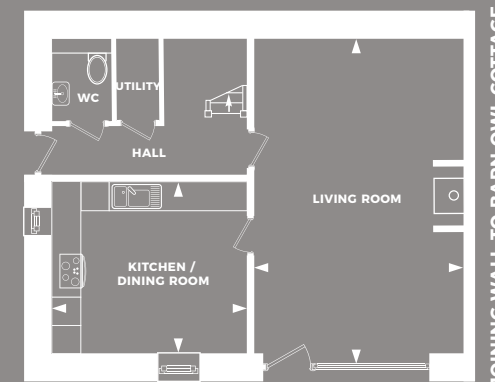
A sociable, open-plan kitchen diner, with all mod-cons and luxury quartz worktops, balances practicality and beauty with ease.

A relaxing lounge area, boasting a fireplace, opens onto a well-presented patio area via a glazed door. Roe Deer View benefits from private parking for two cars, and an enclosed landscaped garden which is easy to maintain.

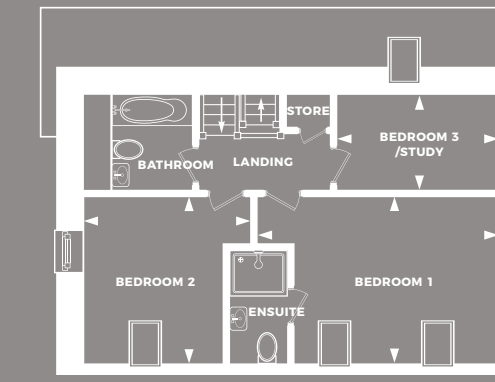
The front of the property is approached via a peaceful and exclusive private access. The gardens are east facing.

**£399,000**  
**BUILD COMPLETION - PHASE 2**

## FLOORPLANS



GROUND FLOOR



FIRST FLOOR